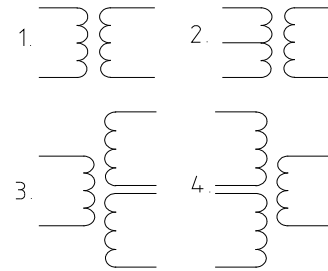



ELECTRIC CHARACTERISTICS

Rated frequency	50/60 Hz
Electric strength	4kV
Insulation class	B
Max. ambient temperature	70°C


ELECTRIC DIAGRAM


EI 54	Max. output power (VA)	PRI (V)	SEC (V)	Short circuit protection
-12/...	7	110-230	3-24	Inherently short circuit proof
-12A/...	15	110-430	3-24	Not short circuit proof
-12F/...	16	110-230	3-30	Non-inherently short-circuit proof
-13F/...	16	110-240	3-31	Non-inherently short-circuit proof
-21F/...	18	110-230	3-24	Non-inherently short-circuit proof
-32F/...	20,5	110-230	3-24	Non-inherently short-circuit proof
-32T/...	20,5	110-230	3-24	Non-inherently short-circuit proof

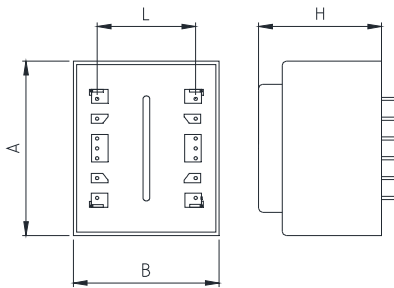
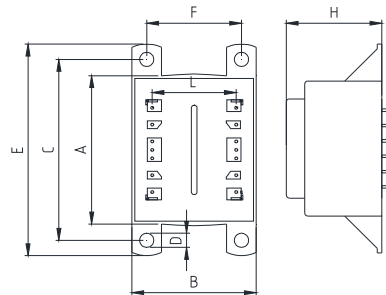
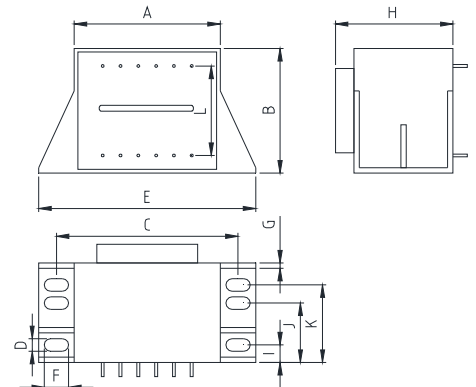
Approved to EN 61558
Safety class II

CONNECTION

Solder pins Ø 0,8 mm

MECHANICAL DIMENSIONS (mm)

EI 54	A	B	C	D	E	F	G	H	I	J	K	L	Weight (g)	Case
-12/...	57,6	48,6	-	-	-	-	-	41,7	-	-	-	30	410	O
-13/...	57,6	48,6	65	4,2	75,2	37,5	-	41,7	-	-	-	30	410	KK
-21/...	57,6	48,6	68	3,5	82,5	6,5	1,5	42,8	11,2	22,1	-	30		V
-32/...	56,4	47,2	-	-	-	-	-	43,2	-	-	-	30	500	O
-33/...	56,4	47,2	65	4,2	74	37,5	-	43,2	-	-	-	30	500	KK

CASE "O"

CASE "KK"

CASE "V"


Further versions, prim. or sec. voltages, pin configurations on request.