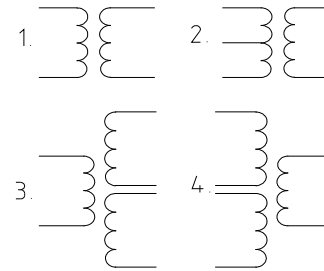



ELECTRIC CHARACTERISTICS

Rated frequency	50/60 Hz
Electric strength	4 kV
Insulation class	B
Max. ambient temperature	70°C


ELECTRIC DIAGRAM


EI 42	Max. output power (VA)	PRI (V)	SEC (V)	Short circuit protection
-12/...	4	24-240	3-24	Inherently short circuit proof
-12A/...	5,4	110-250	3-24	Not short circuit proof
-12F/...	5,8	42-400	3-26	Non-inherently short circuit proof
-13F/...	6	120-240	3-24	Non-inherently short circuit proof
-21F/...	6	110-230	3-230	Non-inherently short circuit proof
-22F/...	6	110-400	3-30	Non-inherently short circuit proof
-32A/...	8,6	110-240	3-170	Not short circuit proof
-32F/...	8,6	24-230	3-400	Non-inherently short circuit proof

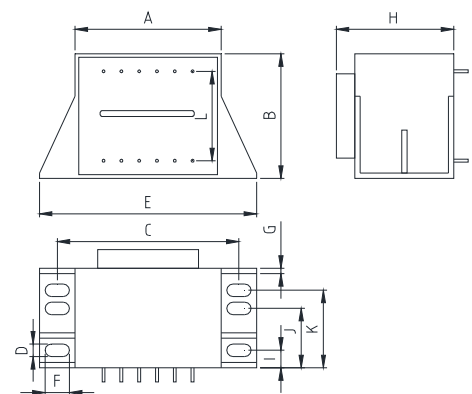
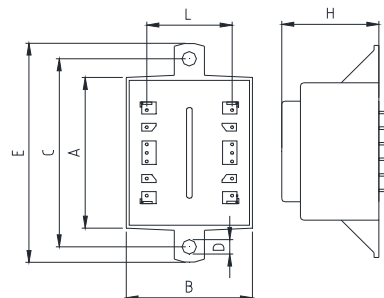
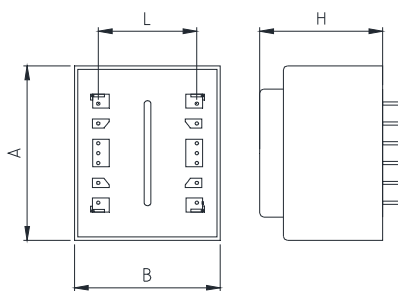
Approved to EN 61558
Safety class II

CONNECTION

Solder pins Ø 0,8 mm

MECHANICAL DIMENSIONS (mm)

EI 42	A	B	C	D	E	F	G	H	I	J	K	L	Weight (g)	Case
-12/...	43,8	36,8	-	-	-	-	-	32,3	-	-	-	25	196	O
-13/...	43,8	36,8	55	4,2	64	-	-	32,3	-	-	-	25	196	K
-21/...	45	38	55	3,5	65	6,8	1,5	33	-	17,7	-	25	196	V
-32/...	44,1	37,1	-	-	-	-	-	38	-	-	-	25	255	O

CASE "O"
CASE "K"
CASE "V"


Further versions, prim. or sec. voltages, pin configurations on request.